

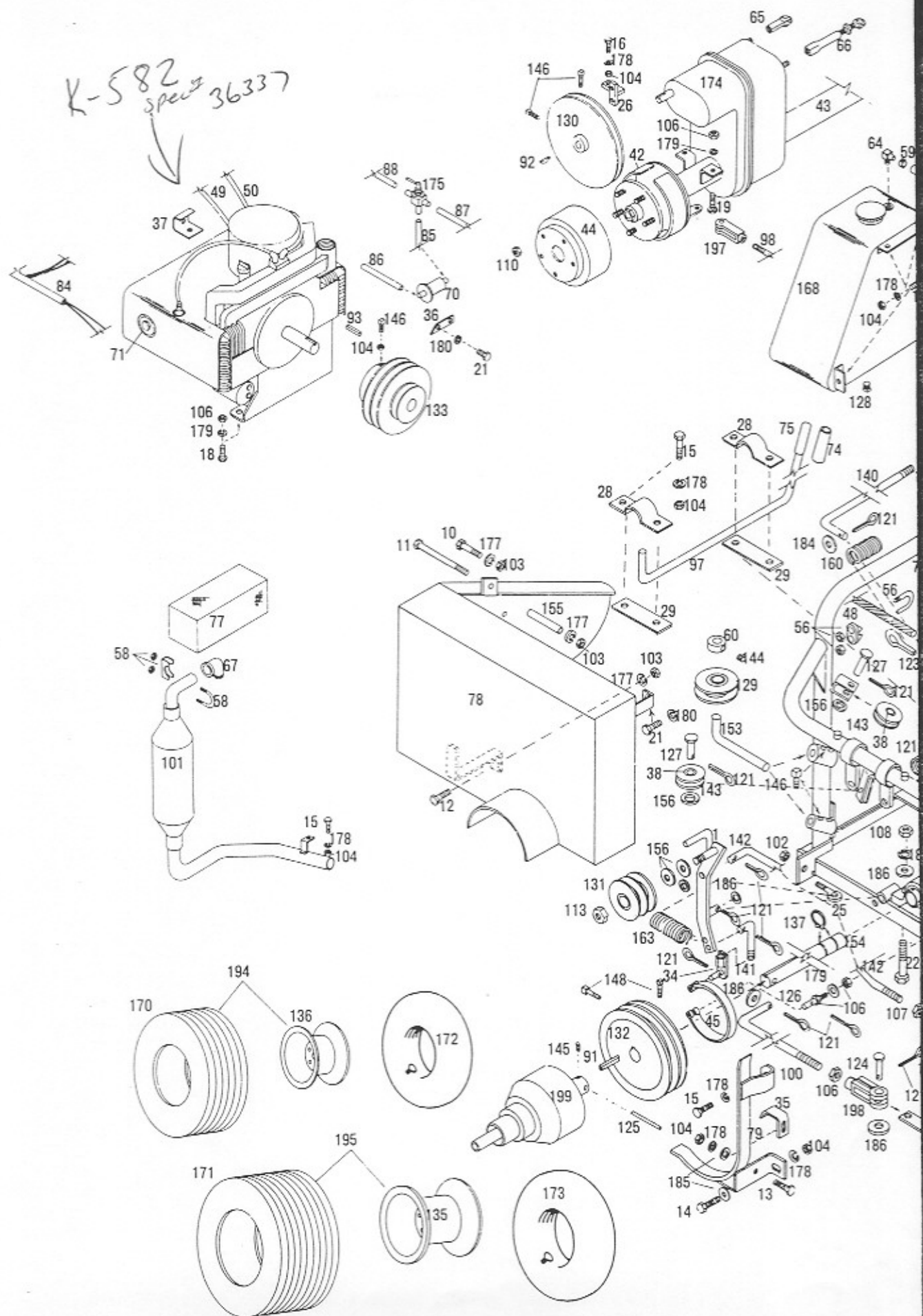
YAZOO

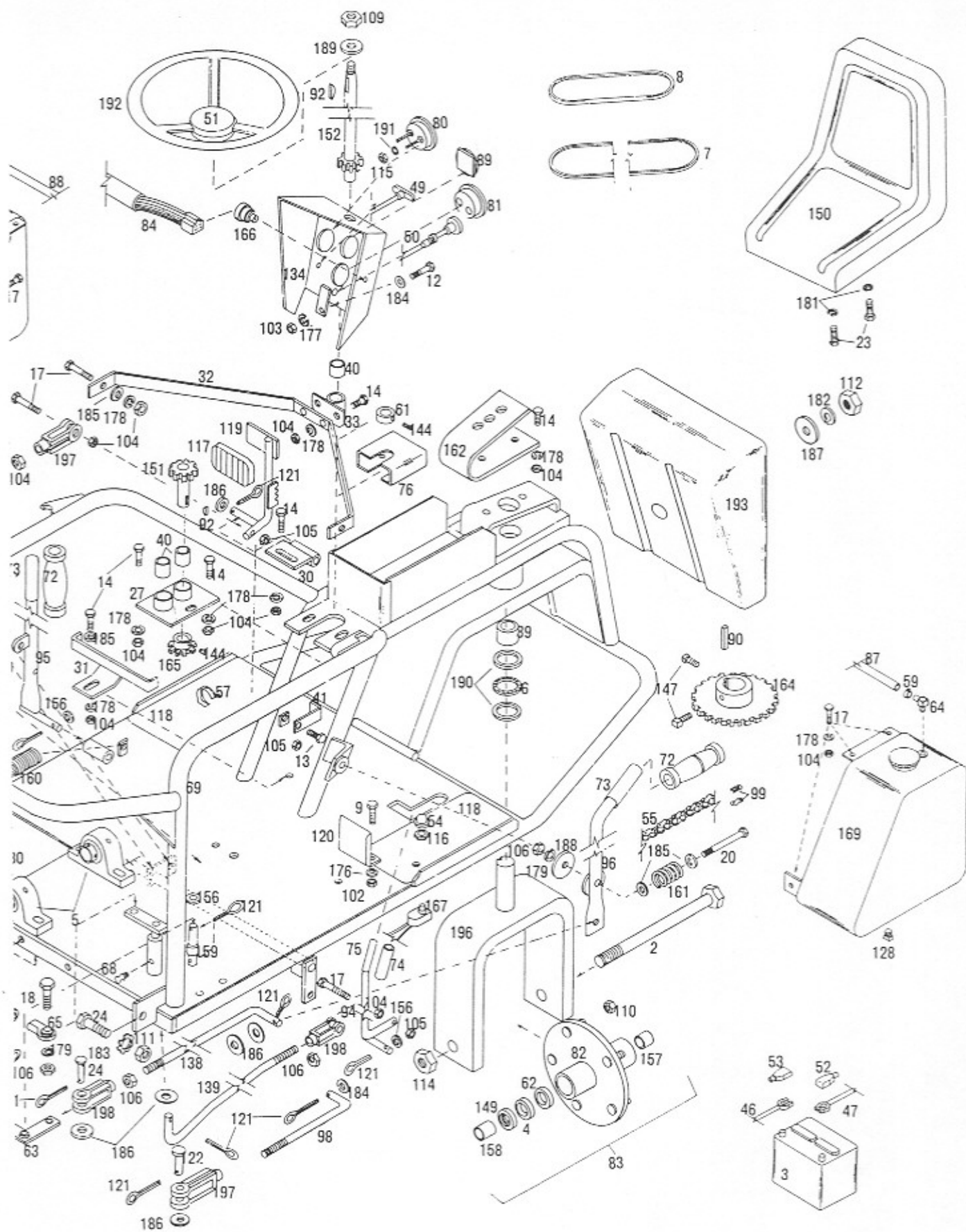
3-WHEEL RIDER



PTO-KM.23
OWNER'S MANUAL

K-582 spec 36337

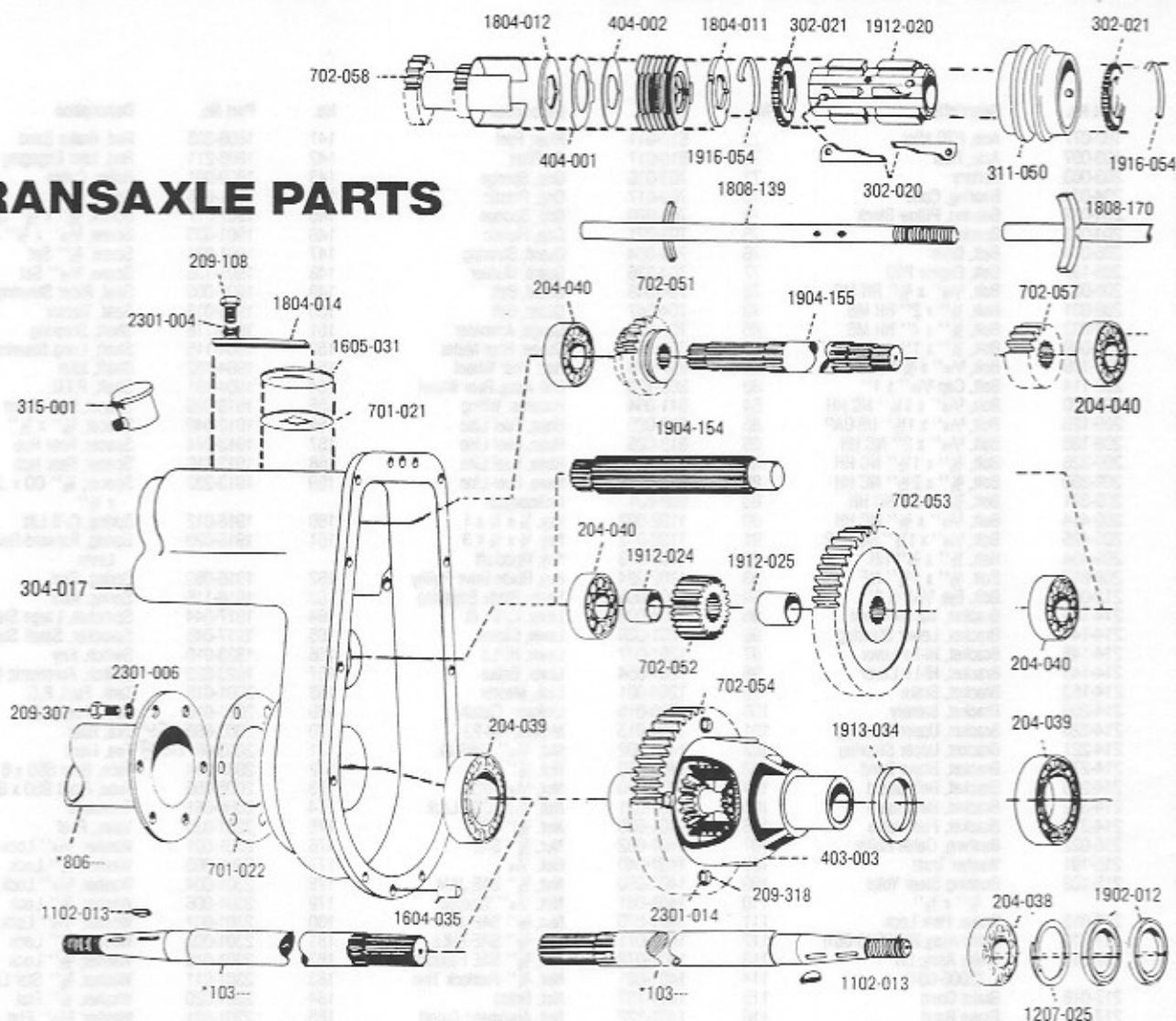




PTO-KM 23 CHASSIS PARTS

No.	Part No.	Description	No.	Part No.	Description	No.	Part No.	Description
1	102-077	Arm, PTO Idler	70	610-011	Filter, Fuel	141	1808-203	Rod, Brake Band
2	103-097	Axle, Rear	71	610-017	Oil Filter	142	1808-211	Rod, Idler Engaging
3	203-003	Battery	72	703-016	Grip, Sponge	143	1809-001	Roller, Cable
4	204-034	Bearing, Cone	73	703-017	Grip, Plastic	144	1901-006	Screw, Set
5	204-077	Bearing, Pillow Block	74	703-020	Grip, Sponge	145	1901-017	Screw, $\frac{3}{16}$ " x $\frac{3}{4}$ " Set
6	204-078	Bearing, Thrust	75	703-021	Grip, Plastic	146	1901-033	Screw, $\frac{1}{16}$ " x $\frac{3}{4}$ " Set
7	205-074	Belt, Drive	76	704-084	Guard, Steering	147	1901-034	Screw, $\frac{3}{16}$ " Set
8	205-137	Belt, Engine PTO	77	704-336	Guard, Muffler	148	1901-136	Screw, $\frac{1}{16}$ " Set
9	208-002	Bolt, $\frac{3}{16}$ " x $\frac{3}{4}$ " RH MS	78	704-345	Guard, Belt	149	1902-005	Seal, Rider Steering Hub
10	208-031	Bolt, $\frac{1}{4}$ " x 2" RH MS	79	704-347	Guard, Belt	150	1903-013	Seat, Tractor
11	208-032	Bolt, $\frac{1}{4}$ " x 4" RH MS	80	706-002	Gauge, Ammeter	151	1904-115	Shaft, Steering
12	209-049	Bolt, $\frac{1}{4}$ " x 1"	81	706-003	Gauge, Hour Meter	152	1904-116	Shaft, Long Steering
13	209-108	Bolt, $\frac{5}{16}$ " x $\frac{3}{4}$ " USS CAP	82	807-038	Hub, Rear Wheel	153	1904-152	Shaft, Idler
14	209-114	Bolt, Cap $\frac{5}{16}$ " x 1"	83	808-123	Hub Assy, Rear Wheel	154	1904-191	Shaft, P.T.O.
15	209-120	Bolt, $\frac{5}{16}$ " x 1 $\frac{1}{2}$ " NC HH	84	811-004	Harness, Wiring	155	1913-029	Spacer, Belt Guard
16	209-126	Bolt, $\frac{5}{16}$ " x 1 $\frac{1}{2}$ " US CAP	85	812-025	Hose, Fuel Line	156	1913-040	Spacer, $\frac{5}{16}$ " x $\frac{3}{8}$ "
17	209-138	Bolt, $\frac{5}{16}$ " x 2" NC HH	86	812-026	Hose, Fuel Line	157	1913-074	Spacer, Rear Hub
18	209-326	Bolt, $\frac{3}{8}$ " x 1 $\frac{1}{2}$ " NC HH	87	812-027	Hose, Fuel Line	158	1913-216	Spacer, Rear Hub
19	209-350	Bolt, $\frac{3}{8}$ " x 2 $\frac{1}{2}$ " NC HH	88	812-028	Hose, Fuel Line	159	1913-232	Spacer, $\frac{7}{8}$ " OD x .360 ID
20	209-391	Bolt, $\frac{3}{8}$ " x 3" NC HH	89	902-001	Inclinometer			x $\frac{1}{2}$ "
21	209-414	Bolt, $\frac{1}{16}$ " x $\frac{3}{4}$ " NC HH	90	1102-002	Key, $\frac{1}{8}$ " x $\frac{1}{4}$ " x 1	160	1916-012	Spring, C/S Lift
22	209-425	Bolt, $\frac{1}{16}$ " x 1 $\frac{1}{2}$ " NC CAP	91	1102-012	Key, $\frac{1}{8}$ " x $\frac{1}{4}$ " x 3	161	1916-020	Spring, Forward-Reverse
23	209-494	Bolt, $\frac{1}{2}$ " x $\frac{3}{4}$ " HH	92	1102-013	Key, Woodruff			Lever
24	209-617	Bolt, $\frac{5}{16}$ " x 1 $\frac{1}{2}$ " NF	93	1102-024	Key, Blade Drive Pulley	162	1916-080	Spring, Seat
25	212-003	Bolt, Eye $\frac{3}{16}$ " x 2"	94	1201-006	Lever, Blade Engaging	163	1916-116	Spring, Idler
26	214-106	Bracket, Transmission	95	1201-008	Lever, C/S Lift	164	1917-044	Sprocket, Large Steering
27	214-144	Bracket, Lower Steering	96	1201-036	Lever, Clutch	165	1917-045	Sprocket, Small Steering
28	214-148	Bracket, Hi-Lo Lever	97	1201-037	Lever, Hi/Lo	166	1923-010	Switch, Key
29	214-149	Bracket, Hi-Lo Lever	98	1201-054	Lever, Brake	167	1923-023	Switch, Automatic Cutoff
30	214-153	Bracket, Brake	99	1204-001	Link, Master	168	2001-015	Tank, Fuel, R.S.
31	214-206	Bracket, Battery	100	1205-015	Linkage, Clutch	169	2001-016	Tank, Fuel L.S.
32	214-220	Bracket, Upper Steering	101	1304-015	Muffler, KM-23	170	2003-666-054	Tire, Rear
33	214-221	Bracket, Upper Steering	102	1401-002	Nut, $\frac{3}{16}$ " Flexlock	171	2003-667-058	Tire, Front
34	214-276	Bracket, Brake Band	103	1401-010	Nut, $\frac{1}{4}$ " USS	172	2005-054	Tube, Rear 650 x 8
35	214-283	Bracket, Belt Guard	104	1401-020	Nut, $\frac{1}{16}$ " USS	173	2005-055	Tube, Front 950 x 8
36	214-312	Bracket, Belt Guard	105	1401-021	Nut, $\frac{1}{16}$ " USS Lock	174	2006-061	Transaxle
37	214-318	Bracket, Fuel Valve	106	1401-030	Nut, $\frac{3}{16}$ " USS	175	2201-030	Valve, Fuel
38	215-022	Bushing, Cable Roller	107	1401-032	Nut, $\frac{3}{16}$ " SAE	176	2301-001	Washer, $\frac{3}{16}$ " Lock
39	215-101	Washer Trust	108	1401-040	Nut, $\frac{1}{16}$ "	177	2301-003	Washer, $\frac{1}{4}$ " Lock
40	215-103	Bushing Steer Yoke	109	1401-050	Nut, $\frac{1}{16}$ " SAE JAM	178	2301-004	Washer, $\frac{1}{16}$ " Lock
		$\frac{3}{4}$ " x $\frac{1}{2}$ "	110	1401-061	Nut, $\frac{1}{16}$ " Tapered	179	2301-006	Washer, $\frac{3}{16}$ " Lock
41	217-012	Brake, Park Lock	111	1401-070	Nut, $\frac{5}{16}$ " SAE JAM	180	2301-007	Washer, $\frac{1}{16}$ " Lock
42	217-016	Brake Assy, RH(2006-061)	112	1401-071	Nut, $\frac{5}{16}$ " SAE FULL	181	2301-008	Washer, $\frac{1}{2}$ " Lock
43	217-017	Brake Assy, LH	113	1401-072	Nut, $\frac{5}{16}$ " SAE Flexlock	182	2301-010	Washer, $\frac{5}{16}$ " Lock
		(2006-061)	114	1401-081	Nut, $\frac{3}{16}$ " Flexlock Thin	183	2301-011	Washer, $\frac{5}{16}$ " Star Lock
44	217-018	Brake Drum	115	1401-197	Nut, Brass	184	2301-020	Washer, $\frac{1}{4}$ " Flat
45	217-020	Brake Band	116	1401-222	Nut, Automatic Cutoff	185	2301-021	Washer, $\frac{5}{16}$ " Flat
46	301-057	Cable, Negative			Switch	186	2301-022	Washer, $\frac{3}{16}$ " Flat
47	301-058	Cable, Positive	117	1601-001	Pad, Brake Pedal	187	2301-028	Washer, 1 $\frac{3}{8}$ " OD
48	301-106	Cable	118	1601-004	Pad, Foot			x $\frac{3}{4}$ " ID
49	301-113	Cable, Throttle	119	1602-011	Pedal, Brake	188	2301-045	Washer, Fiber 1 $\frac{3}{4}$ " OD
50	301-114	Cable, Choke	120	1602-012	Pedal, Automatic Cutoff			x $\frac{3}{4}$ " ID
51	303-015	Cap, Steering Wheel	121	1604-002	Pin, $\frac{3}{32}$ " Cotter	189	2301-096	Washer, Concave
52	303-016	Cap, Battery Red	122	1604-013	Pin, $\frac{5}{16}$ " x 1 $\frac{1}{4}$ " Rivet	190	2301-097	Washer, Thrust
53	303-017	Cap, Battery Black	123	1604-038	Pin, $\frac{3}{16}$ " Cotter	191	2301-284	Washer, Star Lock
54	303-081	Cap, Automatic Cutoff	124	1604-061	Pin, $\frac{3}{16}$ " Rivet	192	2303-008	Wheel, Steering
		Switch	125	1604-066	Pin, $\frac{5}{16}$ " x 2" Roll	193	2304-009	Weight
55	305-045	Chain	126	1604-103	Pin, Break Band	194	2305-018	Wheel Assy, Rear
56	307-002	Clamp, Cable	127	1604-107	Pin	195	2305-022	Wheel Assy, Front
57	307-005	Clamp, 1 $\frac{1}{4}$ " Throttle	128	1606-016	Plug, $\frac{3}{4}$ " Pipe	196	2501-018	Yoke, Rear Wheel
58	307-016	Clamp, Muffler	129	1608-009	Pulley	197	2501-027	Yoke, $\frac{5}{16}$ "
59	307-026	Clamp, Hose	130	1608-113	Pulley, Transmission	198	2501-030	Yoke, $\frac{3}{8}$ "
60	311-002	Collar, $\frac{5}{16}$ "	131	1608-148	Pulley, Idler	199	1904-190-001	PTO Shaft, Male Section
61	311-003	Collar, $\frac{3}{4}$ "	132	1608-336	Pulley, PTO Shaft-		1904-190-002	PTO Shaft, Female Section
62	312-008	Cone, Steering Hub	133	1608-345	Pulley, Engine			(Cutting Section)
63	501-002	Elbow	134	1613-002	Panel, Instrument			
64	501-003	Elbow, Fuel	135	1805-026	Rim, Front			
65	502-002	End, Rod	136	1805-027	Rim, Rear			
66	502-013	End, Rod	137	1806-008	Ring, Snap			
67	503-013	Elbow, Muffler	138	1806-143	Rod, Forward-Reverse			
68	603-004	Fitting, Grease	139	1808-144	Rod, C/S Linkage			
69	605-060	Frame, Main	140	1808-149	Rod, Brake Linkage			

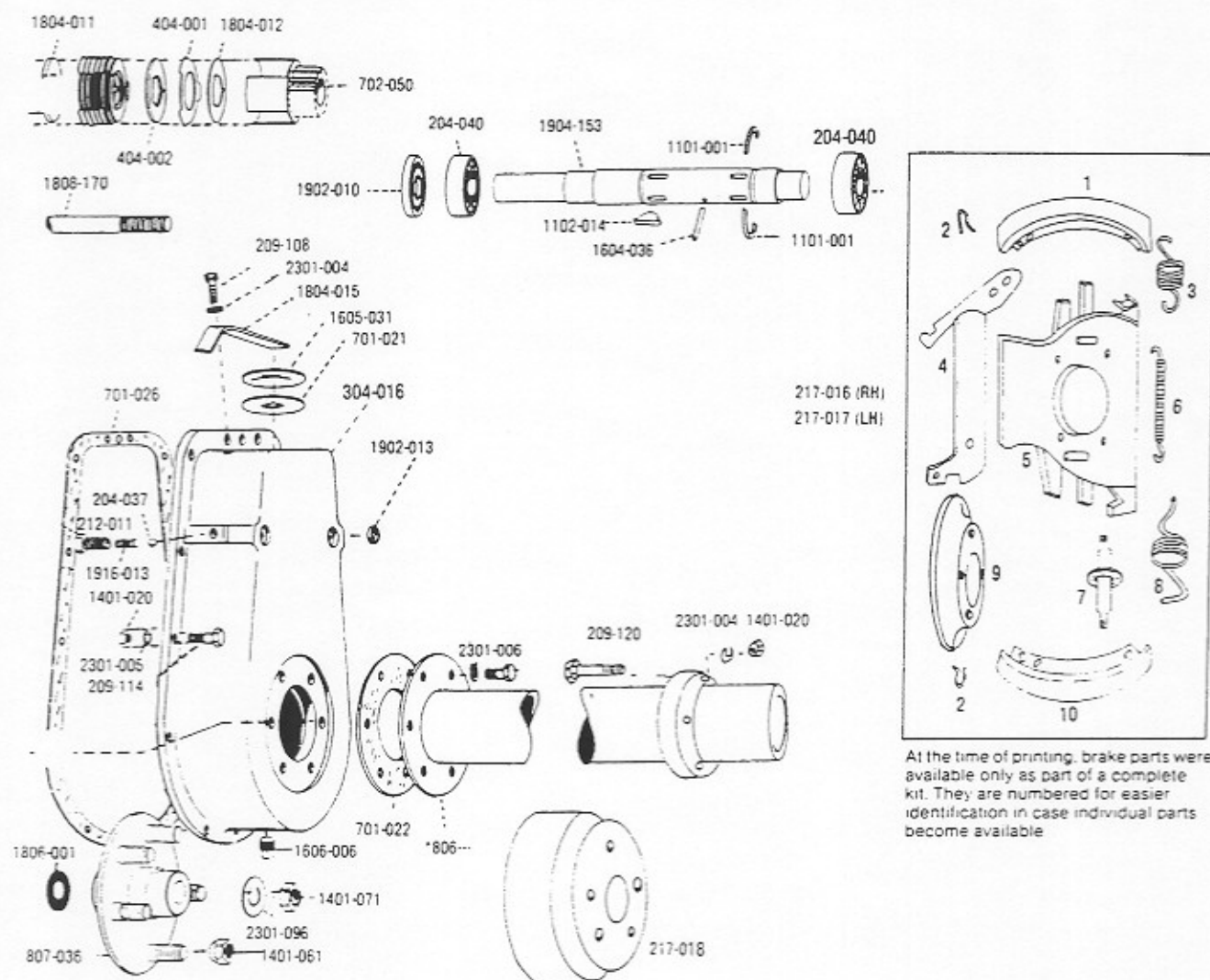
TRANSAXLE PARTS



Part No. Description

- | | | | |
|-----------|---|-----------|-----------------------------------|
| * 103-091 | Long axle | 403-003 | Complete differential (less gear) |
| * 103-091 | Short axle | 404-001 | Outer disc (16 required) |
| 204-037 | Detent ball | 404-002 | Inner disc (14 required) |
| 204-038 | Ball bearing | 701-021 | Inspection plate gasket |
| 204-039 | Diff. Carrier bearing | 701-022 | Axle housing gasket |
| 204-040 | Ball bearing | 702-050 | Reverse gear |
| 209-108 | 5/16-18 x 3/4" HH bolt | 702-051 | Hi-Low shift gear |
| 209-114 | 5/16-18 x 1" HH bolt | 702-052 | Differential drive gear |
| 209-120 | 5/16 x 1 1/4" HH bolt | 702-053 | Intermediate drive gear |
| 209-307 | 3/8-16 x 3/4" HH bolt | 702-054 | Differential gear |
| 209-318 | 3/8-24 x 1" HH Ht. bolt | 702-057 | Primary drive gear |
| 212-011 | Spring retainer bolt | 702-058 | Forward drive gear |
| 217-018 | Brake drum | * 806-090 | Short axle housing |
| 217-016 | Brake assembly (RH) | * 806-091 | Long axle housing |
| 217-017 | Brake assembly (LH) | 807-036 | Rider drive wheel hub |
| 302-020 | Clutch dog cam | 1101-001 | Keeper, 2 Halves |
| 302-021 | Clutch adjustment cam | 1102-013 | Woodruff key |
| 304-016 | Deep half case | 1102-014 | Hypoc key |
| 304-017 | Shallow half case, with transaxle brake | 1207-025 | Ring lock |
| 311-050 | Selector collar | 1401-020 | 5/16-18 nut |
| 315-001 | Oil breather cup | | |

Illustrated Parts Lookup - PTO-KM 23, 93 - TRANSAXLE



- 1401-020 5/16-18 nut
- 1401-061 3/4" tapered nut
- 1401-071 5/8-18 full nut
- 1604-035 3/8" x 3/4" dowell pin
- 1604-036 Clutch retainer pin
- 1605-031 Oil fill inspection plate
- 1606-006 3/8" standard pipe drain plug
- 1804-011 Inner disc retainer
- 1804-012 Outer disc retainer
- 1804-014 Inspection plate retainer
- 1804-015 Inspection plate retainer
- 1806-001 3/2" I.D. x 1" O.D. ring
- 1808-139 Hi-Low selector rod, used with brake
- 1808-170 Forward & reverse selector rod, used with brake
- 1902-012 Axle seal
- 1902-013 Control rod oil seal
- 1904-153 Clutch shaft
- 1904-154 Splined shaft
- 1904-155 Intermediate drive shaft
- 1912-020 Clutch sleeve

- 1912-024 Short clutch sleeve
- 1912-025 Intermediate sleeve, long
- 1913-034 Differential spacer
- 1916-013 Detent spring
- 1916-054 Clutch adjusting spring
- 2301-004 3/8" lock washer
- 2301-005 3/8" ext. star lock washer
- 2301-006 3/8" lock washer
- 2301-014 3/8" Int. star lock washer
- 2301-096 3/8" cupped spring washer

- 310-020 Complete clutch
- 2006-061 Transaxle w/brake, PTO Wisconsin & PTO Briggs

*A check of parts list is required for complete part number

WARNING!

95 out of 100 mowing accidents are caused by the way the machine is operated.

That's why you shouldn't even start the ignition of your new riding mower until you've read and **thoroughly understand** this Owner's Manual (particularly the safety rules).

Because the cutting head is out front and away from the operator, your Yazoo commercial mower is safe. Since the cutting head is out in front, you can see what you are cutting. Plus, with a Yazoo rider, you're protected by heavy-duty guards, as well as the engine itself, because it's located between you and the cutting blade.

This is a **commercial** riding mower—a heavy piece of equipment that is only as safe as its operator. You make the rules, so make mowing safety a habit in your family.

Owner's Responsibility

- Insist on a safety demonstration from your Yazoo dealer.
- Read this Owner's Manual thoroughly and understand how your mower works. **Make sure you know how to stop your engine quickly.** Know where the brakes are.
- Before you start your mower, detach the spark plug wire(s) and disengage the blade drive. Then inspect beneath the cutting section, making sure all blade nuts are tight, and no foreign object is caught underneath. Finally, check the entire mower and make sure that all nuts, bolts and parts are secure.
- Adjust the cutting height while the mower is on a level, firm surface.
- Inspect the intended mowing area and pick up any stones, sticks, bottle caps or other foreign objects which might be thrown by a mower.
- Check all fluid levels—oil, gas, hydro axle.
- Disengage clutches and blades and shift into neutral before starting mower.
- Do not alter or remove the safety guards or safety devices.
- Never operate your Yazoo rider at more than a 15-degree angle of bank. Most engines don't lubricate themselves properly at an angle greater than 15 degrees. Remember, too, that if you go over a root or bump, the angle of the mower will change, so allow plenty of margin to take care of the unexpected. **Most riding mower accidents happen on slopes of more than 15 degrees.**
- On slopes, mow across, not up and down. To control your Yazoo on slopes, use the foot brake as necessary. If the mower transaxle is suddenly jerked into reverse on a slope, the rear end of the mower may have a tendency to lift.
- Never let a child operate a mower. And never let anyone else operate your mower, unless he or she has received a complete course of instruction—including a safety demonstration—on how the mower operates and has read and understands the Operator's Manual.

While Operating:

- Wear sensible clothing—long pants; boots or heavy shoes that will grip, even in wet weather; safety glasses to protect the eyes from low hanging branches; and thin gloves (like golfers') for a sure grip. Also, don't wear anything that's so loose that it might get caught on something.
- If your mower ever vibrates excessively or sounds unusual, shut off your engine, disconnect the spark plug(s) and disengage the blade drive. Then—and only then—look underneath the cutting section for something caught in the blade, or something that has been loosened or bent.
- **Never** carry passengers. And don't allow anyone (particularly children) to remain in the area you're about to mow.
- If someone should approach you, or if you need to get off your mower for any reason, shut off your engine completely—including blade drive and ignition. Do this manually, even though your mower has an operator presence control.
- The owner is responsible for keeping the operator presence control working properly.
- Do not race the engine; this is not only dangerous, it's harmful. Don't alter governor settings.
- Never mow at night, or other times when visibility is low.
- Never run the mower indoors where carbon monoxide fumes can collect.
- Handle gasoline with care. Never add fuel to a running engine. And when you run out of gas, give your engine time to cool down before refueling. Gasoline spilled on a hot engine is a fire hazard.
- Allow the engine to cool before storing rider in any enclosure such as a garage or storage shed.
- To reduce potential fire hazard, keep your mower free from build-ups of grass, grease, leaves and accumulations of dirt.

Maintain your Yazoo properly at all times. Check parts frequently and follow our maintenance and storage instructions.